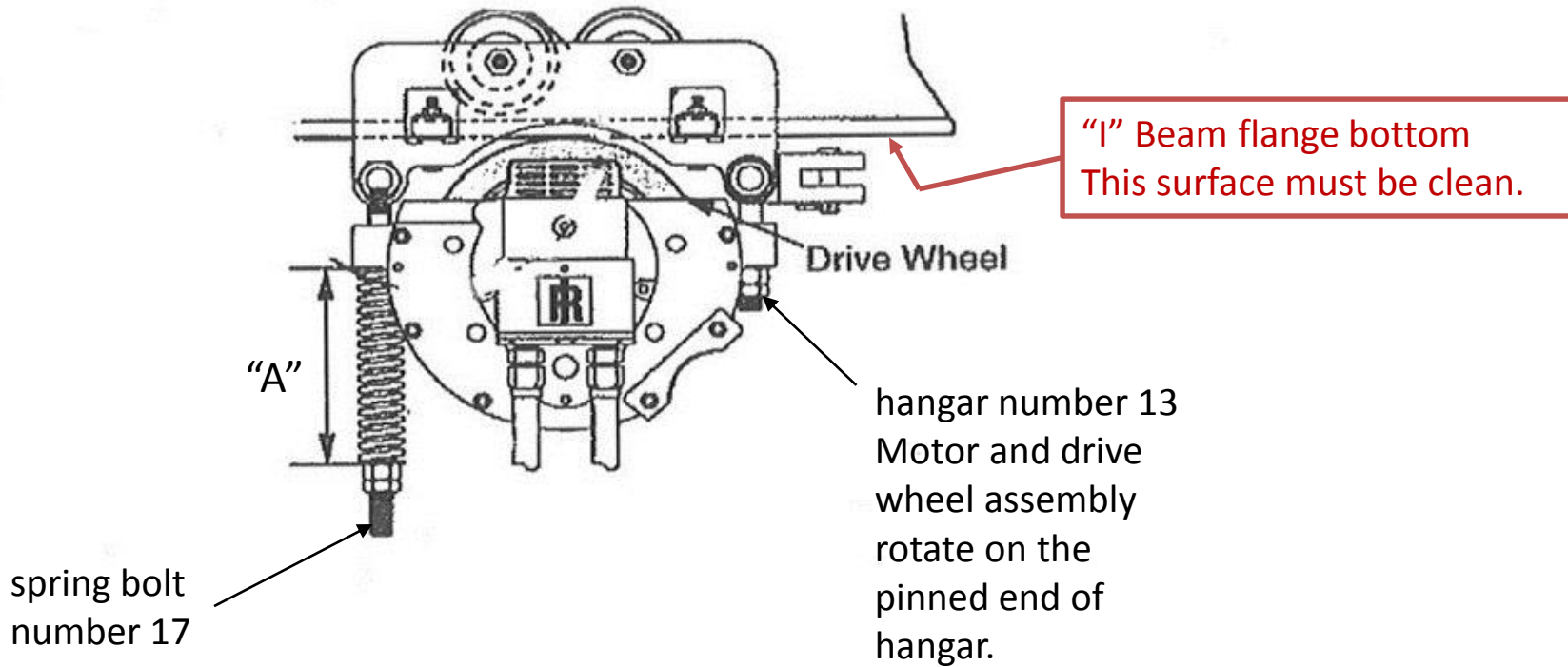


MTK Trolley Drive wheel Adjustment

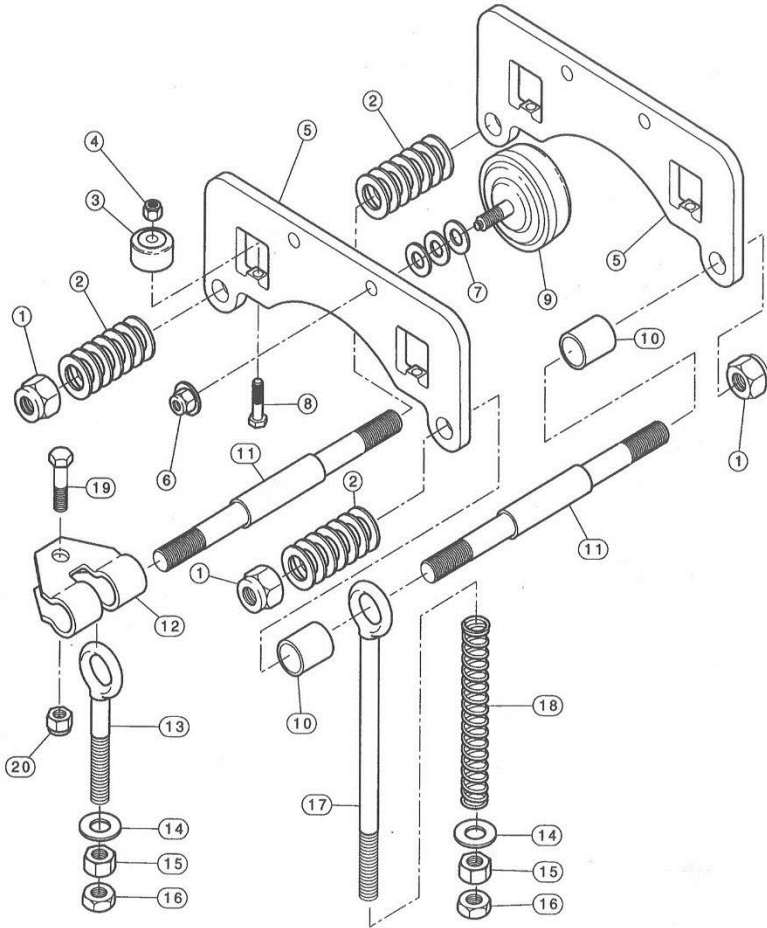
- 1. It is Imperative that the bottom surface of the I beam flange is clean. Grease and dirt on this surface will prevent the proper adjustment.**
2. Set “A” dimension to 6”.
3. Loosen jam nut on hangar number 13. Bring nut up until wheel touches bottom of “I Beam” flange. Tighten jam nut.
4. Adjust spring on spring bolt number 17 to exert enough pressure between the drive wheel and bottom of “I Beam” flange to make wheel drive the trolley assembly back and forth. Tighten jam nut.
5. If the unit will not adjust, look for binding, worn or twisted parts and loosen or replace as necessary. Repeat steps 2 through 4

MTK Trolley Drive wheel Adjustment



MTK Trolley Drive wheel Adjustment

TROLLEY ASSEMBLY DRAWING



(Dwg. MHP0683)

TROLLEY ASSEMBLY PARTS LIST

| ITEM NUMBER | DESCRIPTION OF PART | QUANTITY TOTAL | PART NUMBER |
|-------------|--|----------------|---------------|
| 1 | Nut | 4 | MTK-864 |
| 2 | Washer (2.66 to 6.25 in. [68 to 159 mm]) | 88 | MTK-748 |
| | Washer (6.26 to 12.00 in. [160 to 305 mm]) | 128 | |
| 3 | Guide Roller | 4 | MTK-719 |
| 4 | Nut | 4 | MTK-440 |
| 5 | Side Plate | 2 | MTK-690 |
| 6 | Nut | 4 | MTK-418 |
| 7 | Washer | 12 | MTK-725 |
| 8 | Capscrew | 4 | MTK-863 |
| 9 | Wheel (Cast Iron - Standard) | 4 | MTK-A691 |
| | Wheel (Bronze - S-COR-E feature) | | MTK-AR691 |
| 10 | Spacer | 2 | MTK-711 |
| 11 | Shaft (2.66 to 6.25 in. [68 to 159 mm]) | 2 | MTK-746-A |
| | Shaft (6.26 to 12.00 in. [160 to 305 mm]) | | MTK-746-D |
| 12 | Tongue (Includes item 19 and 20) | 1 | MTK-703 |
| 13 | Hanger | 1 | MTK-699 |
| 14 | Washer | 2 | MTK-741 |
| 15 | Nut | 2 | MTK-776 |
| 16 | Locknut | 2 | MTK-18 |
| 17 | Spring Bolt | 1 | MTK-713 |
| 18 | Spring | 1 | MTK-715 |
| 19 | Capscrew | 1 | Order Item 12 |
| 20 | Nut | 1 | Order Item 12 |